



HOW TO SAIL SUSTAINABLY



By FYLY Yachting



WATER

01

Conserve Water! Take short showers and turn off taps when not in use to conserve fresh water.

02

Use eco-friendly biodegradable soaps and shampoos to minimize harm to marine life.

03

You might have noticed the LARQ pitchers aboard these are there for you to use and help prevent plastic water bottles

Don't worry, we've got you covered! We've ensured that you have plastic-free amenities on board, including eco-friendly biodegradable soaps and shampoos. We hope you love them!

WASTE

01

Dispose of waste properly by recycling and separating recyclables from non-recyclables. Don't leave trash aboard as leaving it aboard risks pollution if the wind carries it away.

02

Minimize consumption of single-use items and opt for locally produced goods to reduce carbon footprint.

03

Empty the black tank when it reaches around two-thirds to three-quarters full to prevent overflows and ensure efficient waste disposal.

04

Empty the black tank only in open sea and in deep waters.



SYSTEM & SPECIFICATIONS

01

Lowering the cruising speed of the yacht can significantly reduce fuel consumption. By operating at a slower speed, the engine operates more efficiently, resulting in fuel savings.

Fun Fact: Decreasing cruising speed by just 1 knot (1.15 mph or 1.85 km/h) can lead to fuel savings of up to 10-20%.

02

Switch off lights and electronic devices when not in use to save electricity.

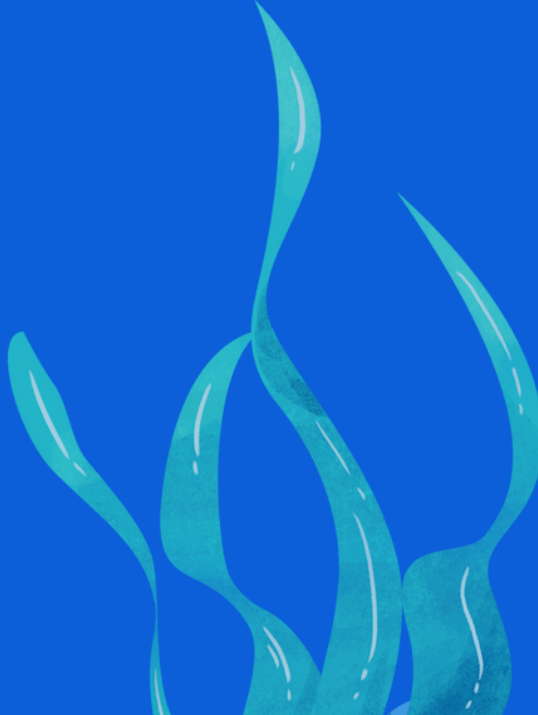
Use natural light during the day whenever possible instead of relying on artificial lighting.

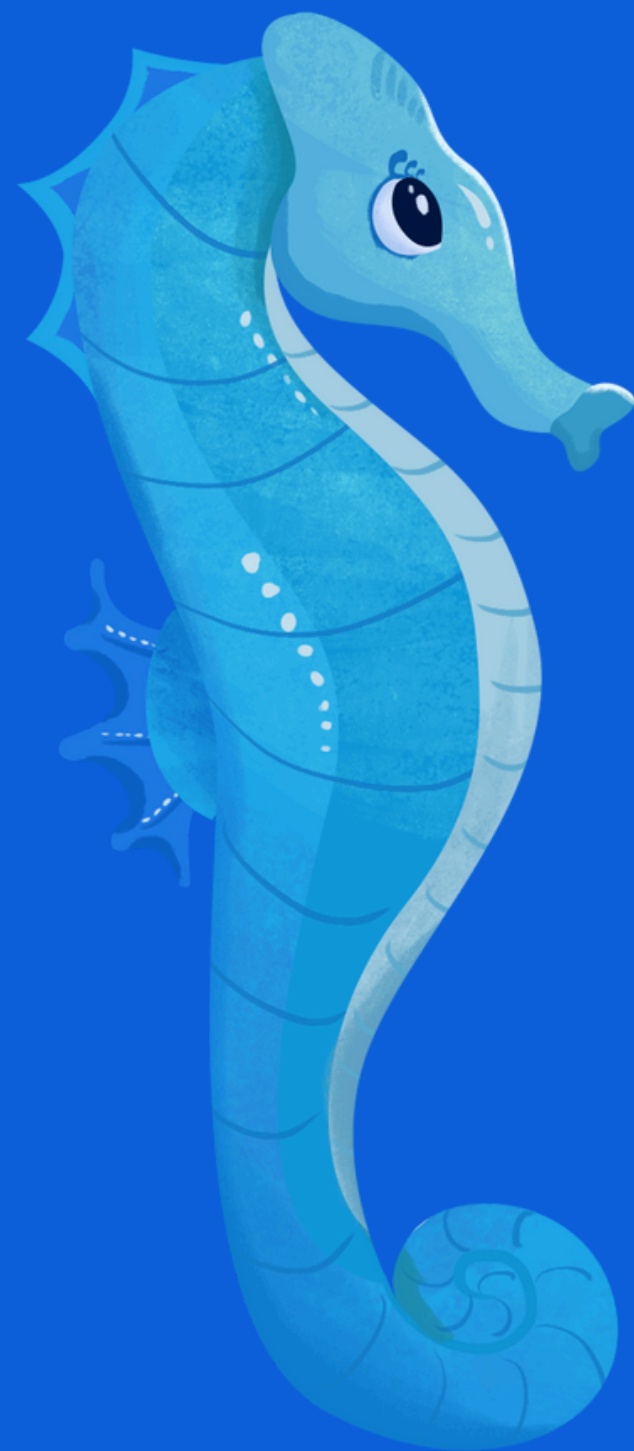
03

Prefer Fans Over AC.
Fans consume less energy compared to air conditioners, making them a more sustainable option for cooling.

04

If you must use the AC.
Set the AC to a moderate temperature to maintain comfort while minimizing energy consumption.

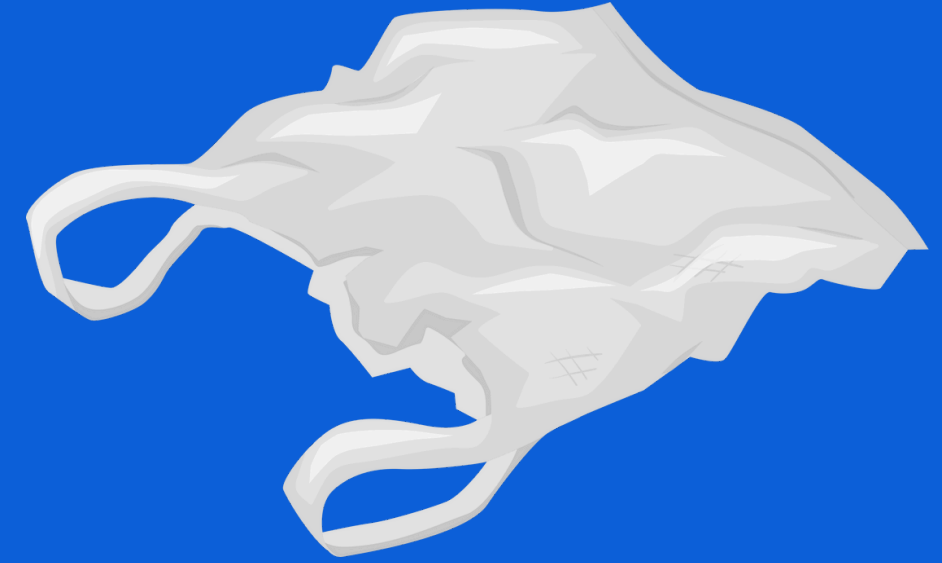




BUY LOCAL

Buying local is more sustainable because it reduces the environmental impact associated with transportation, supports local economies, and promotes community resilience.

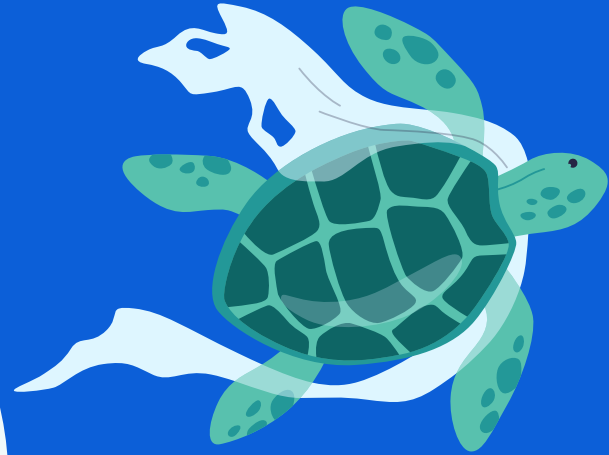
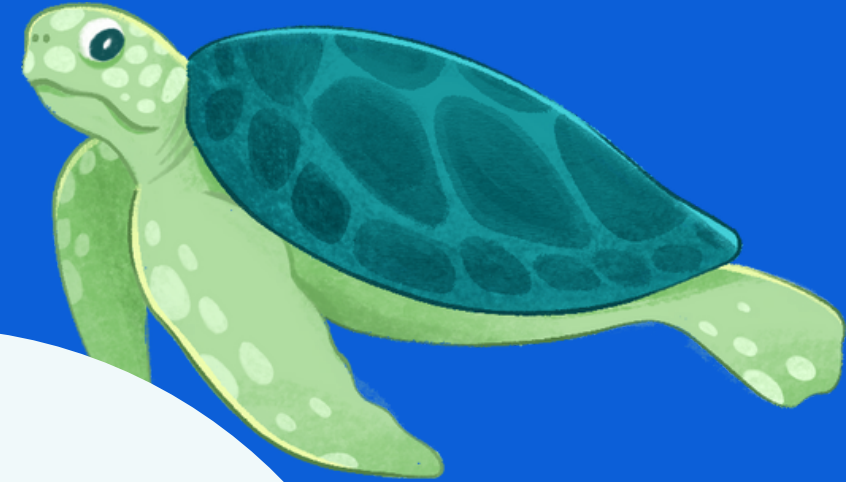
At FYLY, we take pride in our commitment to sustainability. That's why all of our complimentary gifts aboard are thoughtfully packaged without plastic, sourced locally, and sustainably crafted. It's our way of not only reducing our environmental impact but also supporting local communities



Food



Food ?



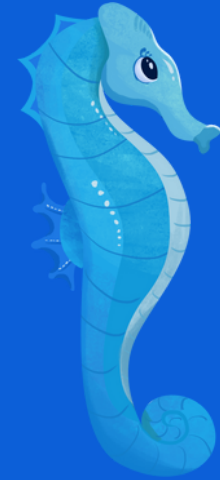
Did you know that sea turtles often mistake plastic bags for jellyfish, a staple food source? This confusion leads to significant issues for turtles, as ingesting plastic impedes their ability to dive and feed on fish.

Don't worry, we've got you covered! We have biodegradable trash bags on board.



Decomposition times for various items

Does not biodegrade but can break into smaller pieces



Hundreds of years



Hundreds of years



200-500 years



More than 5 Years



Hundreds of years

